



UNIVERSITY OF ARKANSAS PULASKI TECHNICAL COLLEGE

University of Arkansas - Pulaski Technical College The Center for Humanities and Arts (CHARTS) Technical Specifications

THEATER MEASUREMENTS

Height of Proscenium: ~21'
Proscenium Opening: ~50'
Grand Valance: ~16.9'
Front Wall of Stage (proscenium opening) to back wall of stage: ~40'
Stage from side wall to fly rail: ~90'
Total Stage Area: 3,840 square feet

LOADING DOCK AND BACKSTAGE MEASUREMENTS

Loading Dock (Outside) Width, Under Awning: ~22'
Loading Dock (Outside) Depth, Under Awning: ~51'
Loading Dock Door Dimensions: 12'x10'
Loading Dock (Inside) Width: ~22'
Loading Dock (Inside) Depth: ~30'
Side Access Hallway Width: ~10'
Back Access Hallway Width: ~9'
Stage Door Dimensions: ~11x~10'

ORCHESTRA PIT MEASUREMENTS

Pit Door Opening: ~3'x~7'
Pit Width: ~40'
Pit Depth: ~18'
Pit Height Under Lip: ~7'
Pit Height Open Air: ~8' to stage

ACOUSTIC SHELL MEASUREMENTS

Acoustic Shell Width: ~50'
Acoustic Shell Depth: ~24'
Acoustic Shell Height: ~25'

CHARTS AMENITIES

Dressing Rooms:

- 1 - Large Dressing room with lighted vanities, sinks, lockers, and chairs. Couch and loveseat available for use. All Access to large private bathrooms with showers.
- 1 - Medium Dressing room with lighted vanities, sinks, lockers, and chairs. Couch and loveseat available for use. All Access to medium private bathrooms with showers.

Hospitality Room:

- 1 - Green Room with sink, dishwasher, refrigerator, cabinet space, and couches.

Laundry Room:

- 1 - Laundry Room with two washer and two dryers.

Private Bathroom:

- 1 - Lockable Private Bathroom w/ handicap accessibility

Ice Machine:

- 1 - Pellet Ice Machine

VIDEO INVENTORY

Projectors:

- 1 - Barco HDX-40FLEX, 20K Lumen Projector w/ Panamorph Anamorphic lens
- 2 - Epson PRO LI500UH w/ ELPXO1 Lense

Video Screen:

- 1 - Stewart Film Screen 34.7' Diagonal 2.4:1 Tensioned Screen

Media Player:

- 1 - Oppo BDP-103 Professional Blu-Ray Player

Video Switcher:

- 1 - Crestron DM-8x8 Digital Medial Switcher w/ Card Assortment
- 1-Marshall V-MD72

Input Stations:

Playback Show Computer:

FOH Console and Support Hardware:

AUDIO INVENTORY

- 1 - DiGiCo Quantum 338 w/ Dante 2 Card
- 1 - DiGiCo Dante DQ Rack 48x24
- 2 - PreSonus Eris E5
- 2 - Sennheiser 280PRO Headphones

Amplification:

- 2 - Bose PM8250N Power Match Amplifiers
- 7 - Bose PM8500N Power Match Amplifiers

Audio DSP:

- 2 - Bose Control Space ESP-00
- 1 - Bose Control Space ESP-880
- 1 - Waves Sound Grid Dante Control Bridge
- 1 - Waves Sound Grid Impact Server
- 1 - Waves Sound Grid SMARRT DI2

House Speaker System:

- 10 - Bose Room Match Front Fill Speakers
- 8 - Bose Room Match Line Array Hi/Mid Cabinets
- 16 - Bose Room Match Surround Speakers
- 2 - Bose Room Match 2x15 Subwoofers (not in use)
- 6 - QSC KW181 1000W 18" Subwoofers (in cardioid pattern)

Stage Monitor System:

- 1 - Midas PRO2IP (64x24x3)
- 1 - Midas DL251 48x16 Stagebox w/ Midas DL451
- 1 - Klark-Teknik DN9650 Network Bridge w/ Dante Card
- 1 - Behringer X-32 32x16 Digital Console with Dante Card option
- 1 - Bose Power Match PM8500 8CH Amplifier (500 watts/channel)
- 4 - Bose RMU108 2-way Full Range Monitors
- 6 - ElectroVoice ZLX112 2-way Full Range Monitors
- 2 - ElectroVoice ZLX115 2-way Full Range Monitors
- 4 - QSC K8.2
- 3 - QSC K10.2
- 2 - Shure PSM 900 In-Ear Transmitters/Receivers

Wired Microphones:

- 1 - AKG D112 MK11
- 2 - Audio Technica Pro37
- 2 - DPA 4099
- 1 - Neumann TLM103 Large Diaphragm Condenser Microphone w/ shock mount
- 1 - Neumann KM-184 Stereo Matched Microphone Pair
- 3 - Sennheiser MD421
- 4 - Sennheiser E604
- 3 - Sennheiser E609
- 11 - Sennheiser E925
- 1 - Shure KSM32SL
- 6 - Shure SM58

- 6 - Shure SM57
- 2 - Shure SM81
- 1 - Shure SM7B
- 1 - Shure Beta52
- 2 - Earthworks QTC50
- 2 - Shure KSM 141
- 4 - Sennheiser MKE 600
- 4 - Earthworks Hanging Cardioid Mics

Wireless Microphones:

- 12 - Channels - Shure ULX-D Wireless Receivers
- 16 - Countryman E6 Headset Microphones
- 2 - Dome Parabolic Antennas
- 8 - Shure Beta58 Handheld Transmitters
- 4 - RPW184 Wireless KSM9 Cartridge
- 12 - Shure Body Pack Transmitters
- 4 - Shure WL-93 Lavalier Microphones
- 2 - Sennheiser EW500 Wireless Receivers
- 2 - Sennheiser EW5935 Handheld Microphones
- 2 - Sennheiser A 2003 Fin Antennas

Miscellaneous Sound Equipment:

- 4 - Whirlwind Directors Direct Box
- 1 - Whirlwind Mic Splitter Box/16 Input 32 Out
- 1 - Whirlwind 16 Channel 50' XLR Snake
- 1 - Whirlwind 12 Channel 50' XLR Snake
- 2 - Whirlwind pcDI
- 1 - Klark Teknik Dn200
- 4 - Radial Pro DI
- 4 - Radial Pro AV2
- 60 - Microphone Stands (variable)
- 16 - Quad Box Electrics
- 150+ - Whirlwind XLR, Speaker, 1/4 Cables

Intercom System:

- 1 - 4-Channel Master Station (Control Room)
- 1 - 4-Channel Remote Master Station (SM Desk)
- Assortment of Belt Packs, Headsets, and Handsets.*

LIGHTING INVENTORY

Console:

- 1 - ETC APEX 10 24K Lighting Desk w/ 10 Motorized Playbacks
- 1 - ETC Ion Console w/ Installed Fader Wing, 256 ETC D20E 2.4kw DMX Dimmers (128 2-ch sleds) w/ Artnet 65,536 Outputs
- 1 - ETC Eos Programming Wing
- 1 - ETC Nomad License

Par Cans:

- 30 - ETC S4PAR-EA w/CF & Lens Set
- 16 - ETC 400BD 7.5" Four Leaf Barndoor

LED Fixtures:

- 6 - Chauvet Professional Rouge R3 Spots
- 8 - Chauvet Professional Maverick ML Pyxis
- 21 - Chauvet Professional Rogue R2 Wash
- 1 - Chauvet Professional Maverick Force 2 Profile
- 12 - Martin Rush Batten Hex1
- 8 - Martin Mac Allure Profiles
- 16 - PLCYC1-03-GTL Black PL CYC Luminaire w/ C-Clamp & L5-20 Connector
- 12 - ETC Lustr2 Array
- 4 - ETC Colorsource Par Deep Blue
- 2 - Chauvet Colordash Par
- 22 - Chauvet EZ Par 56

Lasers:

- 2 - X-Laser Skywriter HPX, 2W ILDA
- 2 - X-Laser Caliente Aurora

Follow Spots:

- 2 - Juliat Super Korrigan Followspot – 110V w/ DMX Control & GT1000 Tripod Stand

Ellipsoidals:

- 10 - ETC 414 Source Four (14) w/ CC, CF
- 30 - ETC 419 Source Four (19) w/ CC, CF
- 30 - ETC 426 Source Four (26) w/ CC, CF
- 20 - ETC 436 Source Four (36) w/ CC, CF
- 10 - ETC 450 Source Four (50) w/ CC, CF
- 4 - ETC 41530 Source Four Zoom (15-30) w/ CC, CF
- 4 - ETC 42550 Source Four Zoom (25-50) w/ CC, CF
- 90 - ETC 400CF 6" Colorframe
- 10 - ETC 407CF 7.5" Colorframe
- 50 - ETC 400PH S4 Pattern Holder

- 2 - Chauvet Vesuvio ii

PERFORMANCE PACKAGE INVENTORY

20 - ETC 400RS Drop-in Iris

Miscellaneous Lighting Equipment:

5 - Altman Sky Cyc (not in use)

4 - Rosco V-Hazer 2 - Chauvet Vesuvio ii

Musician Chairs:

90 - Wenger BLK Musician Chairs

Musician Stands:

115 - Wenger BLK Classic 50 Music Stands

Conductor's Equipment:

THEATER DRAPES INVENTORY

1 - Wenger Double Conductor's Podium and Flex Conductor's Stand

Choir Risers: N/A

Flat Risers:

Assorted Carpeted Variable Height Staging Risers w/ Rails

Assorted Variable Height Collapsible Risers

Grand Drape:

1 - Blue, Manual Draw Curtain

Valance:

1 - Blue, Manual Fly

Legs:

2 Sets - Black

Borders:

2 Sets - Black

Travelers:

2 Sets - Black

Tabs:

1 Set - Black

Scrims:

1 - Black

Cyclorama (cyc):

THEATRICAL RIGGING SYSTEM

1 - White

Counterweight Rigging System:

4 - Electric Sets
25 - Drapery and Tracking Line Sets
1 - Fire Safety Curtain

MISCELLANEOUS HOUSE EQUIPMENT

Automated Rigging System:

3 - Orchestra Clouds Enclosure Line Set (Powered)

Tables:

20 - Round Tables
20 - Rectangular Tables
160 - Chairs

Stanchions:

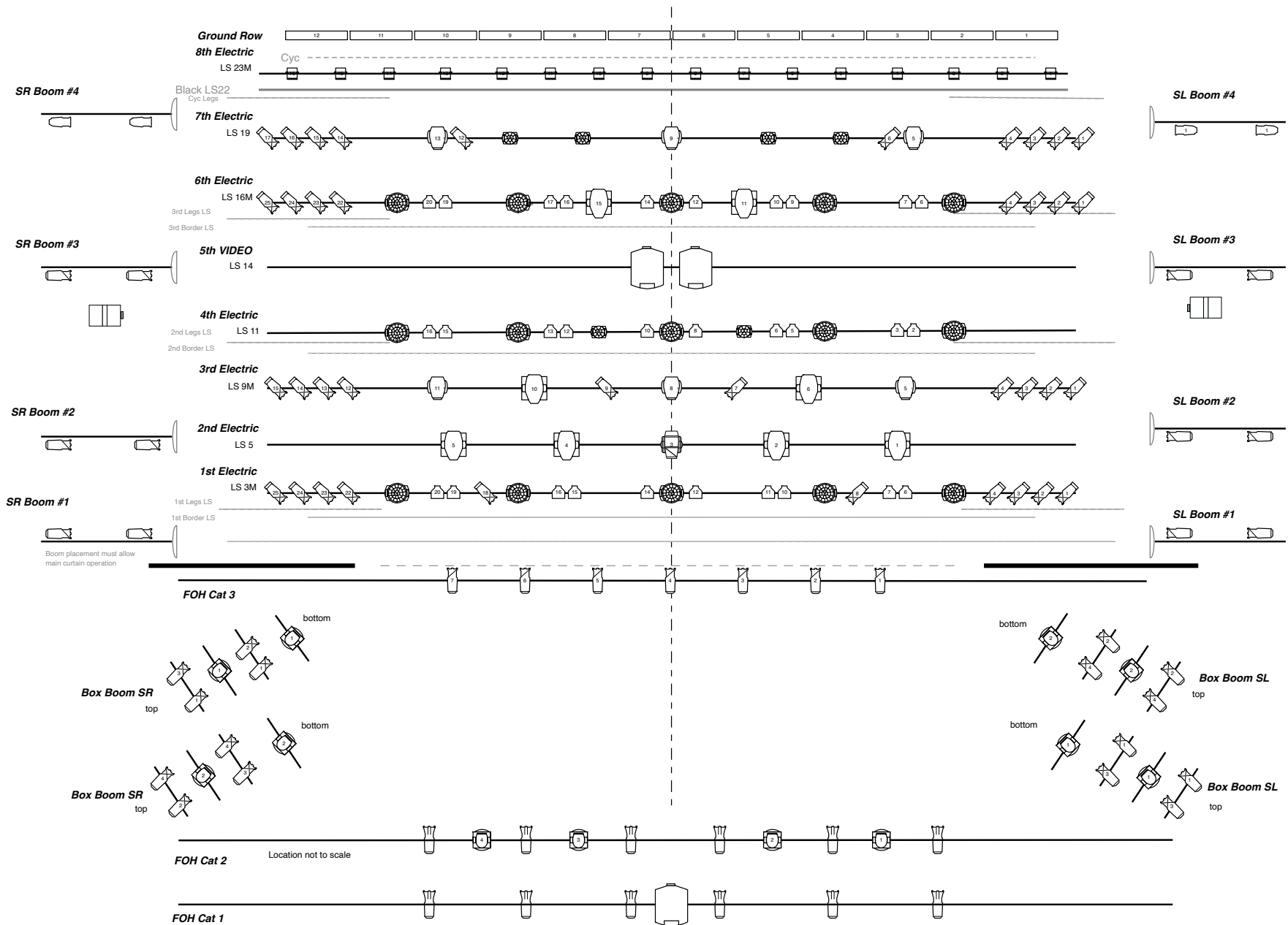
35 - Metal Stanchions

For more technical information or clarity on a certain portion
of this packet, please contact:

JEREMY BAKALEKOS
CHARTS Technical Director

jbakalekos@uaptc.edu

501.313.8261



CHARTS 2023		Light Plot
Venue: Center for Humanities and Arts		
Designer: Jeremy Bakalekos		
		07/27/2024

FIXTURE KEY 07/27/2024	MARTIN	Strand cyc	Lonestar	MAC	Chauvet Pyxis	Chauvet F1
	ETC LED2	S4WRD	Hazer	PJ	Chauvet R2 W	Chauvet R3 S